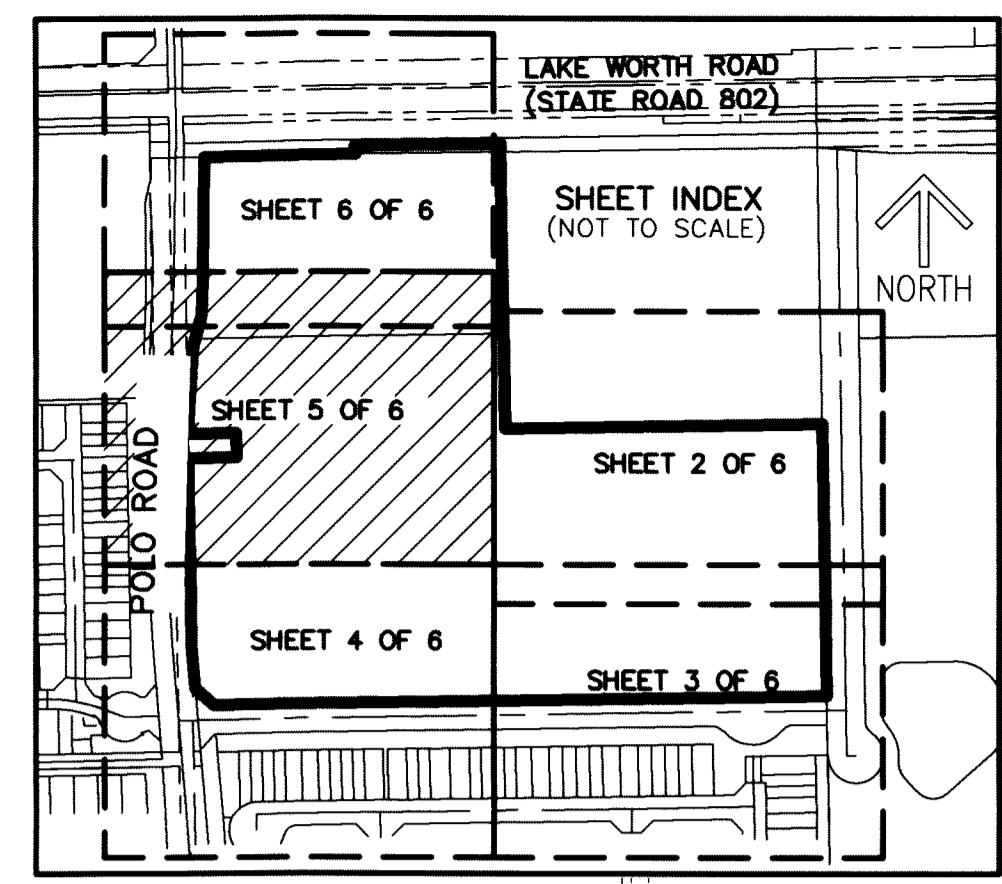


THIS INSTRUMENT PREPARED BY
 DAVID P. LINDLEY
 OF
CAULFIELD and WHEELER, INC.
 SURVEYORS - ENGINEERS - PLANNERS
 7900 GLADES ROAD, SUITE 100
 BOCA RATON, FLORIDA 33434 - (561)392-1991
 CERTIFICATE OF AUTHORIZATION NO. LB3591

POLO GARDENS MUPD

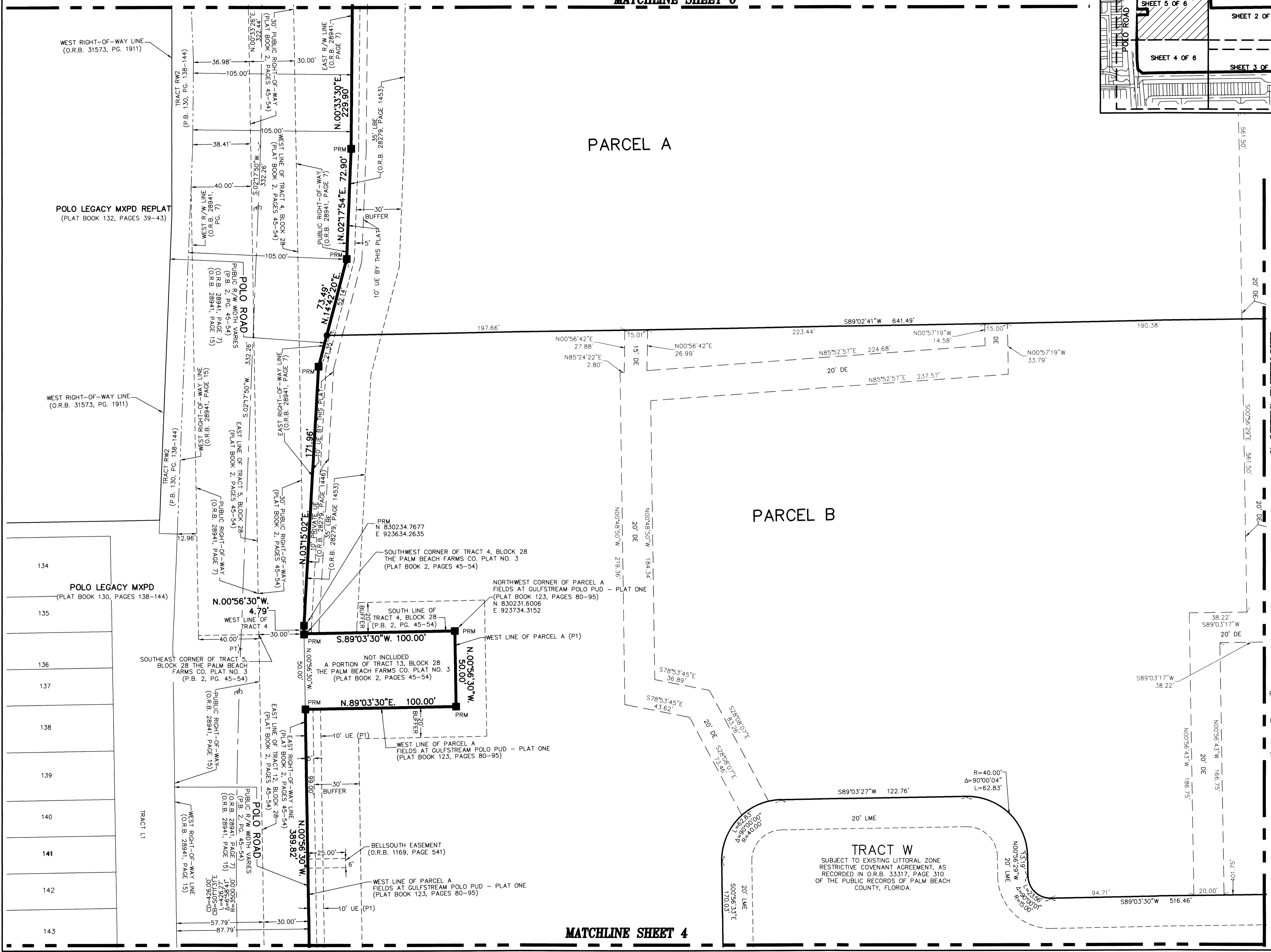
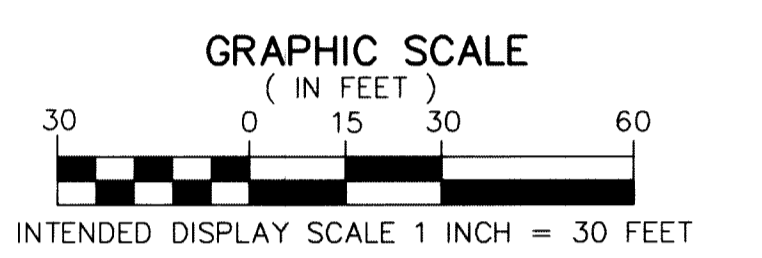
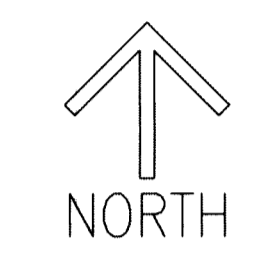
A MULTIPLE USE PLANNED DEVELOPMENT
 A REPLAT OF A PORTION OF PARCEL A, FIELDS OF GULFSTREAM POLO PUD - PLAT ONE, AS RECORDED IN PLAT BOOK 123, PAGES 80 THROUGH 95, TOGETHER WITH A PORTION OF TRACT 4, BLOCK 28, PALM BEACH FARMS CO. PLAT NO. 3, AS RECORDED IN PLAT BOOK 2, PAGES 45 THROUGH 54, ALL OF THE PUBLIC RECORDS OF PALM BEACH COUNTY, FLORIDA, LYING IN SECTION 29, TOWNSHIP 44 SOUTH, RANGE 42 EAST, PALM BEACH COUNTY, FLORIDA

MATCHLINE SHEET 6



50

SHEET 5 OF 6



- LEGEND/ABBREVIATIONS**
- CL - CENTERLINE
 - Δ - DELTA (CENTRAL ANGLE)
 - CB - CHORD BEARING
 - CD - CHORD DISTANCE
 - DE - DRAINAGE EASEMENT
 - E - EASTING (WHEN USED WITH COORDINATES)
 - L - ARC LENGTH
 - LBE - LANDSCAPE BUFFER EASEMENT
 - P.B. - PLAT BOOK
 - PG. - PAGE
 - S.W. - SOUTHWEST
 - LBE - LANDSCAPE BUFFER EASEMENT
 - LMAE - LAKE MAINTENANCE ACCESS EASEMENT
 - LME - LAKE MAINTENANCE EASEMENT
 - L.W.D. - LAKE WORTH DRAINAGE DISTRICT
 - MUPD - MIXED USE PLANNED DEVELOPMENT
 - N - NORTHING (WHEN USED WITH COORDINATES)
 - O.R.B. - OFFICIAL RECORD BOOK
 - PBCUE - PALM BEACH COUNTY UTILITY EASEMENT
 - PRAS - PRIVATE RESIDENTIAL ACCESS STREET
 - PC - POINT OF CURVATURE
 - PI - POINT OF INTERSECTION
 - PT - POINT OF TANGENCY
 - PNT - POINT OF NON-TANGENCY
 - R - RADIUS
 - R/W - RIGHT-OF-WAY
 - UE - UTILITY EASEMENT
 - WMAE - WATER MANAGEMENT ACCESS EASEMENT
 - PRM - DENOTES SET PERMANENT REFERENCE MONUMENT 4" x 4" x 24" CONCRETE MONUMENT WITH ALUMINUM DISK STAMPED "C&W PRM LB#3591" UNLESS OTHERWISE NOTED
 - PCP - DENOTES SET PERMANENT CONTROL POINT NAIL AND METAL DISK STAMPED "PCP LB#3591"
 - - DENOTES SET IRON ROD AND CAP STAMPED LB#3591
 - SND - DENOTES SET NAIL AND DISK STAMPED "C&W PRM LB3591"
 - ▲ - DENOTES FOUND PERMANENT REFERENCE MONUMENT NAIL AND DISC STAMPED "PRM" LB#3591
 - (P1) - FIELDS AT GULFSTREAM POLO PUD - PLAT ONE, AS RECORDED IN (P.B. 123, PG. 80 THROUGH 95) OF THE PUBLIC RECORDS OF PALM BEACH COUNTY FLORIDA

NOTES
COORDINATES, BEARINGS AND DISTANCES
 COORDINATES SHOWN ARE GRID
 DATUM = NAD 83 (1990 ADJUSTMENT)
 ZONE = FLORIDA EAST
 LINEAR UNIT = US SURVEY FEET
 COORDINATE SYSTEM 1983 STATE PLANE
 TRANSVERSE MERCATOR PROJECTION
 ALL DISTANCES ARE GROUND UNLESS OTHERWISE NOTED
 SCALE FACTOR = 1.0000236
 GROUND DISTANCE X SCALE FACTOR = GRID DISTANCE
 BEARINGS AS SHOWN HEREON ARE GRID DATUM,
 NAD 83 (1990 ADJUSTMENT), FLORIDA EAST ZONE.

MATCHLINE SHEET 4